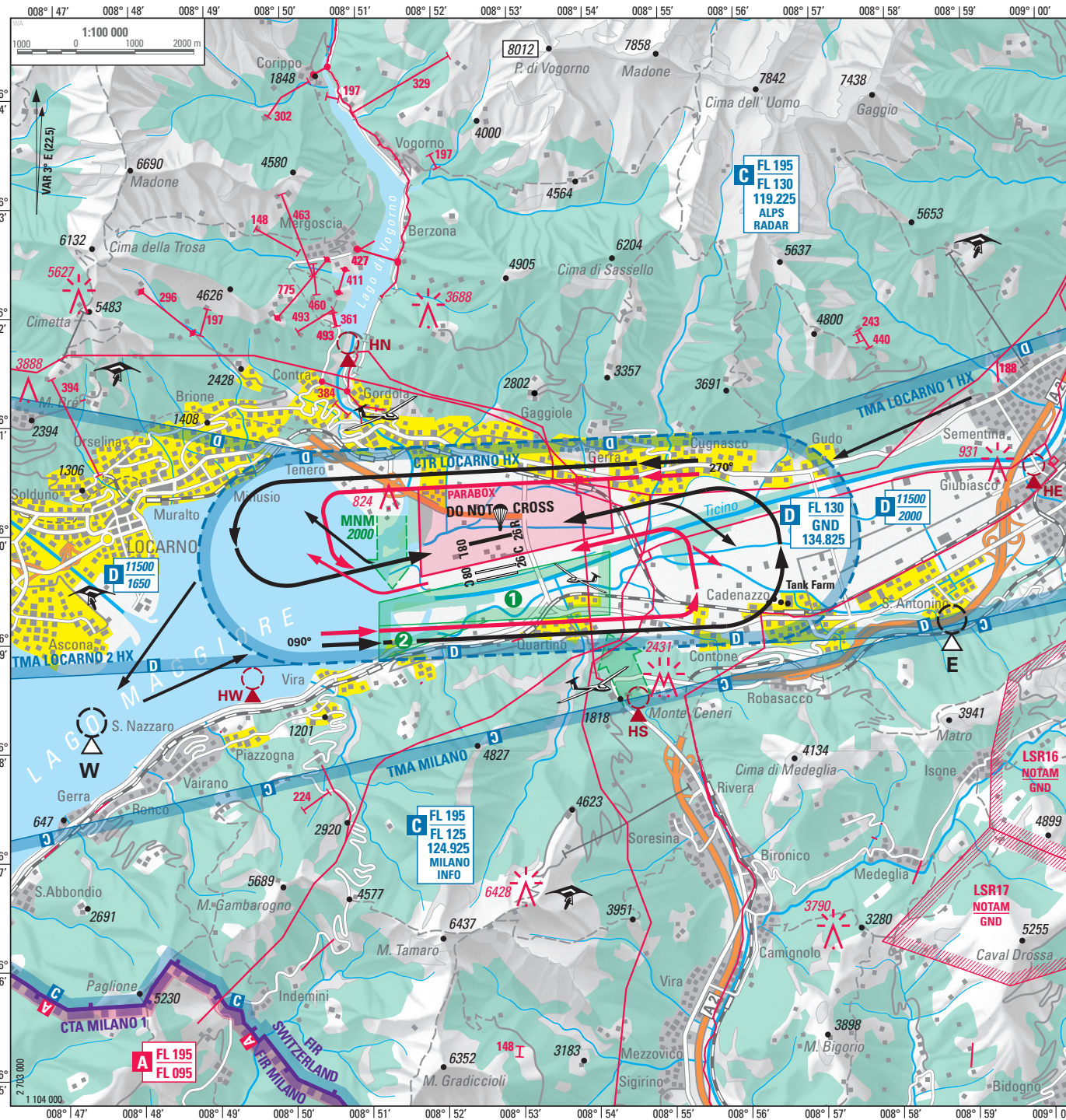


CARTA D'AVVICINAMENTO A VISTA
VISUAL APPROACH CHART

LOCARNO
CIV/MIL LSZL

ELEV 650 ft (198 m)



ATIS	133.455
TWR/AD	134.825
GND	121.700

➔ ACFT con carrello fisso:
Fixed LDG gear ACFT:

RWY 08 2000
RWY 26 3000

➔ ACFT con carrello retrattile:
Retractable LDG gear ACFT:

RWY 08 3000
RWY 26 3000

Attenzione:
Traffico su piste e circuiti paralleli

Caution:
Traffic on PARL RWY and circuits

SECTOR LIMA GOLF

- ① GND / 2500
- ② GND / 1500

L'attivazione viene trasmessa
tramite ATIS
Activation will be broadcasted with ATIS

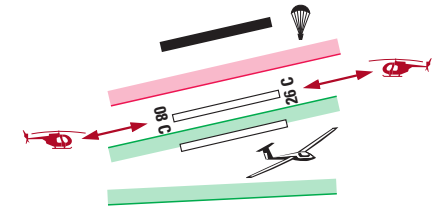


W 46° 08' 17" N / 008° 47' 22" E
E 46° 09' 05" N / 008° 58' 45" E



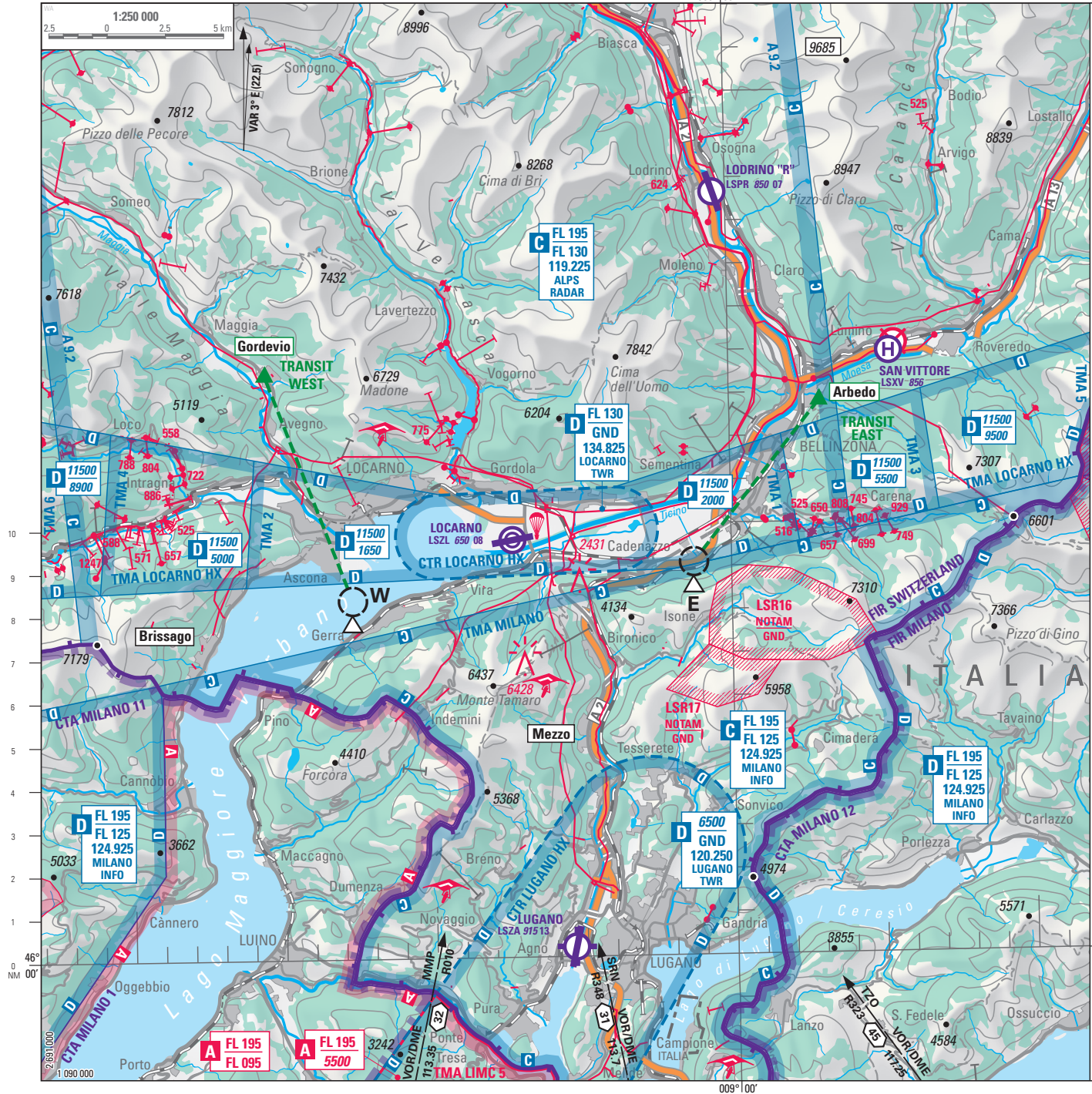
HEL: PPR +41 (0) 91 816 17 31

Evitare le aree PJE e GLD
Avoid PJE and GLD areas



Transponder Mandatory Zone (TMZ):

- Codice 4612
- MONITORANDO 126.750 o contatto Milano Info 124.925
- GND fino il limite verticale inferiore degli spazi aerei controllati sovrastanti
- Code 4612
- MONITORING 126.750 or contact Milano Info 124.925
- GND up to lower vertical limit of overlying controlled airspace



ZURICH INFO	124.700
MILANO INFO	124.925
ATIS	133.455
TWR/AD	134.825
GND	121.700

Ascoltare LOCARNO ATIS
(confirmare indicativo ATIS)

MNT LOCARNO ATIS
(confirm ATIS designator)

Primo contatto radio / First RDO contact

Brissago **Gordevio** **Arbedo** **Mezzo**

o 5 MIN prima dell' entrata nella CTR
or 5 MIN prior entering CTR

--- rotte TRANSIT VFR TMA
TMA VFR TRANSIT routes

W 46° 08' 17" N / 008° 47' 22" E
E 46° 09' 05" N / 008° 58' 45" E

Transponder Mandatory Zone (TMZ):

- Codice 4612
- **MONITORANDO 126.750 o contatto Milano Info 124.925**
- GND fino il limite verticale inferiore degli spazi aerei controllati sovrastanti
- Code 4612
- **MONITORING 126.750 or contact Milano Info 124.925**
- GND up to lower vertical limit of overlying controlled airspace